



Marsh Landing Place

www.marshlandingplace.com



Bill Clark Homes
Building the Tradition

Hidden between the oaks and your imagination.....

Marsh Landing Place of Wilmington, NC, welcomes Bill Clark Homes. With over thirty years experience in building, their hard earned reputation as one of the most trusted new home builders in North Carolina has been built on providing you the most home for your hard-earned money, standing behind what they build, and responding competently and quickly to your needs.



About Marsh Landing Place

- Ogden Elementary School
 - Pool and Clubhouse
- Front/Side Yard Maintenance
 - Sidewalks and Trails
- Homes under \$300,000
- Close to Beach and Shopping
 - Mature trees
 - Low Car Traffic
- High Pedestrian Traffic



Directions: Market St. north, right into Marsh Oaks, right on Sanderling Place, left on Southerland Farms Road.

COLDWELL BANKER

SEA COAST REALTY

Each Office is Independently Owned And Operated

Call Brandon Adams at (910)523-0056 for more information

Marsh Landing Included Features

Cabinets and Countertops

- Granite countertops with 4" granite or "Level 1" ceramic tile backsplash in kitchen
- 42" maple cabinets with adjustable upper shelves, crown molding, and hardware
- Raised vanity with maple cabinets and a 3/4" cultured marble top in guest bathrooms

Flooring

- Mohawk 3" oak hardwood flooring in foyer, great room, kitchen, dining, and hallways
- Mohawk plush carpet with 6 lb. pad in all bedrooms, bonus room & sunroom (when applicable)
- Ceramic tile floor in all bathrooms and utility room

Plumbing Features and Fixtures

- 50 gallon quick recovery electric water heater
- Price Pfister® stainless steel faucet with sidesprayer in kitchen
- 8" double basin stainless steel sink
- Fiberglass garden soaking tub and/or separate fiberglass shower in master bath (per plan)
- Price Pfister® brushed nickel lavatory faucets
- Brushed nickel towel bars and tissue holders
- Raised toilet in master bath
- Fiberglass tub and shower combination in guest bath

Electrical Features and Fixtures

- Fireplace with gas logs and slate surround
- Ceiling fan with light kit in master bedroom and great room
- Ceiling fan prewires in guest bedrooms, bonus room and sunroom (when applicable)
- Four recessed lights in kitchen

Exterior Finishes and Features

- Raised slab foundation with 3000PSI concrete
- SilverLine by Anderson® double pane insulated Low-E windows with a DP45 rating
- 13 SEER Trane® heating and air conditioning system
- Certainteed® R-13 fiberglass wall insulation
- Choice of several fiberglass masonite insulated exterior doors
- Certainteed® fiberglass architectural shingles with lifetime warranty
- Entire yard sodded and irrigated
- Low maintenance aluminum fascias and vinyl soffits
- Choice of several Wayne Dalton® metal garage doors
- James Hardie® siding with ColorPlus technology and 15 year color warranty
- Gutters on front and rear of homes

Appliances

- Whirlpool® stainless steel smooth surface electric range with self cleaning oven
- Whirlpool® stainless steel dishwasher
- Whirlpool® stainless steel vented microwave
- Whirlpool® 1/2 hp garbage disposal

Trim and Finish Details

- Garage drywall finished and painted
- Choice of several two panel Masonite interior doors
- 3 1/4" door casings and 7 1/4" baseboards
- Crown molding on flat ceilings in great room, kitchen, dining, and foyer
- Brushed nickel round interior door handles
- 3' Wainscoting in dining room and foyer (when applicable)
- Framed mirrors in all bathrooms
- Bead board wainscoting in guest bathrooms



MARSH
LANDING
PLACE

Base Prices



The Captiva (1,831 sq ft): \$280,900
W/ Bonus (2,095 sq ft): \$294,900

The Kauai (1,599 sq ft): \$269,900
W/ Bonus (1,921sq ft): \$284,900

The Oahu (1,821 sq ft): \$285,900
W/ Bonus (2,114 sq ft): \$299,900

The Lanai (1,608 sq ft): \$279,900
W/ Bonus (2,148 sq ft): \$294,900

The Cayman (1,474 sq ft): \$265,900
W/ Bonus (1,750 sq ft): \$280,900

The Seabrook (2,225 sq ft): \$304,900
W/ Bonus (2,441 sq ft): \$319,900

The Hibiscus (2,010 sq ft): \$299,900





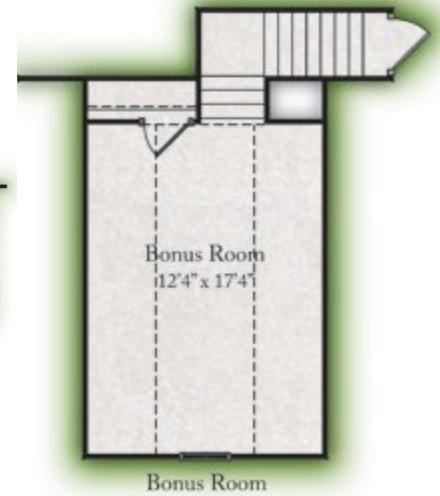
The Captiva



Bill Clark Homes
Building the Tradition



Options:



- Hardwoods
- Tile Baths
- Fireplace
- Granite Kitchen Counters
- 1831 Sq. ft./ 2,095 w/bonus
- Hardie Color Plus Siding

Continuous improvements of our plans and community specifications may result in changes without notice. Any dimensional data shown is approximate. Artwork is for illustrative purposes only. Actual construction details may vary. This plan is property of Bill Clark Homes. Duplication of this plan is prohibited.

Bill Clark Homes
Building the Tradition

For more information contact Brandon Adams at (910) 523-0056

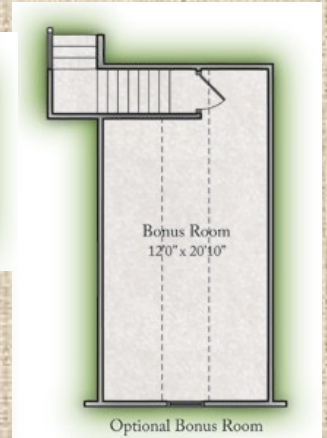
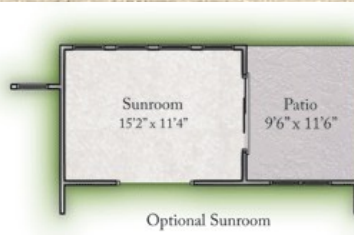




The Kauai



Options:



- Hardwoods
- Tile Baths
- Porch
- Fireplace
- Granite Kitchen Counters
- 1,599 Sq. ft./ 1,921 w/bonus
- Hardie Color Plus Siding

Bill Clark Homes
Building the Tradition

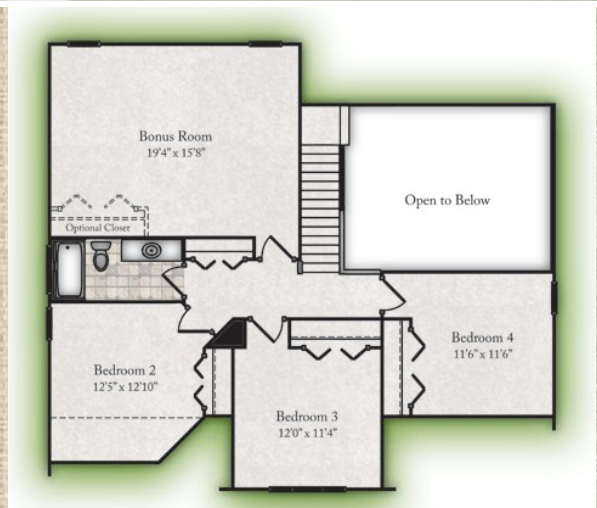
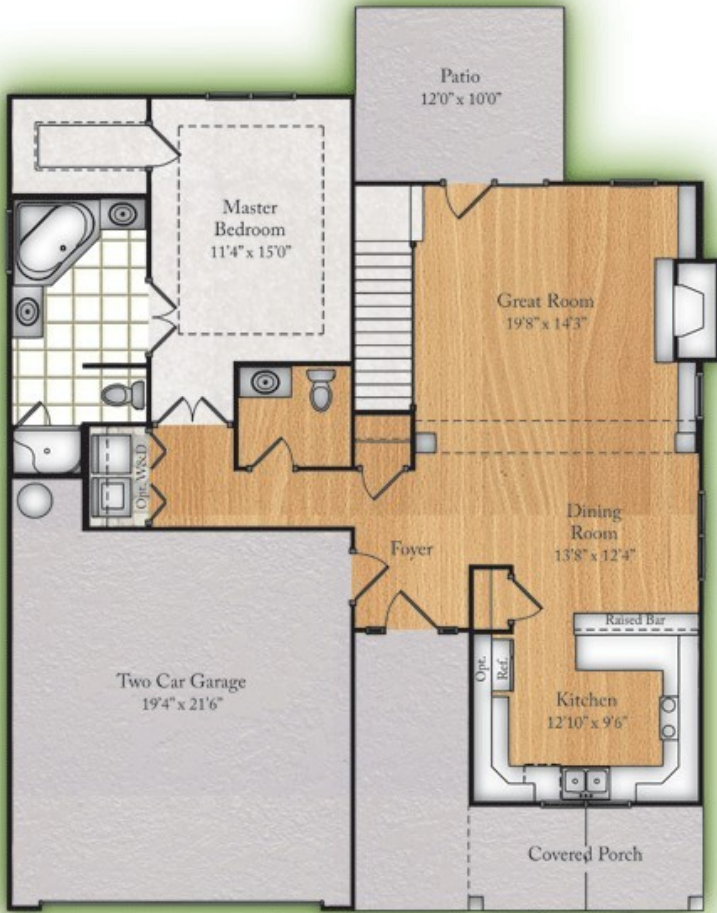
Continuous improvements of our plans and community specifications may result in changes without notice. Any dimensional data shown is approximate. Artwork is for illustrative purposes only. Actual construction details may vary. This plan is property of Bill Clark Homes. Duplication of this plan is prohibited.

For more information contact Brandon Adams at (910) 523-0056





The Oahu



- Hardwoods
- Tile Baths
- Porch
- Fireplace
- Granite Kitchen Counters
- 1,821 Sq. ft./ 2,114 w/bonus
- Hardie Color Plus Siding

Continuous improvements of our plans and community specifications may result in changes without notice. Any dimensional data shown is approximate. Artwork is for illustrative purposes only. Actual construction details may vary. This plan is property of Bill Clark Homes. Duplication of this plan is prohibited.

Bill Clark Homes
Building the Tradition

For more information contact Brandon Adams at (910) 523-0056

www.marshlandingplace.com

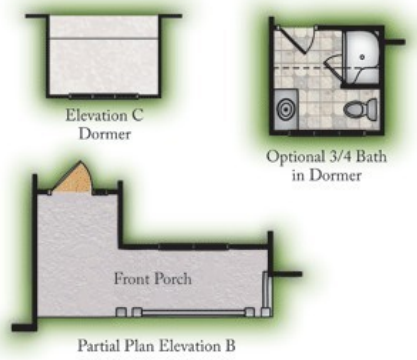




The Lanai



Options:



- Hardwoods
- Tile Baths
- Fireplace
- Granite Kitchen Counters
- 1,608 Sq. ft./ 2,148 w/bonus
- Hardie Color Plus Siding
- Screen Porch upgrade

Continuous improvements of our plans and community specifications may result in changes without notice. Any dimensional data shown is approximate. Artwork is for illustrative purposes only. Actual construction details may vary. This plan is property of Bill Clark Homes. Duplication of this plan is prohibited.



For more information contact Brandon Adams at (910) 523-0056

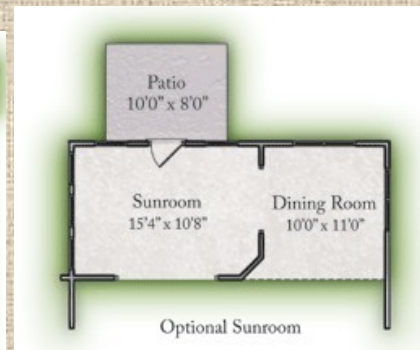




The Cayman



Options:



- Hardwoods
- Tile Baths
- Porch
- Fireplace
- Granite Kitchen Counters
- 1474 Sq. ft./ 1,750 w/bonus
- Hardie Color Plus Siding

Bill Clark Homes
Building the Tradition

Continuous improvements of our plans and community specifications may result in changes without notice. Any dimensional data shown is approximate. Artwork is for illustrative purposes only. Actual construction details may vary. This plan is property of Bill Clark Homes. Duplication of this plan is prohibited.

For more information contact Brandon Adams at (910) 523-0056

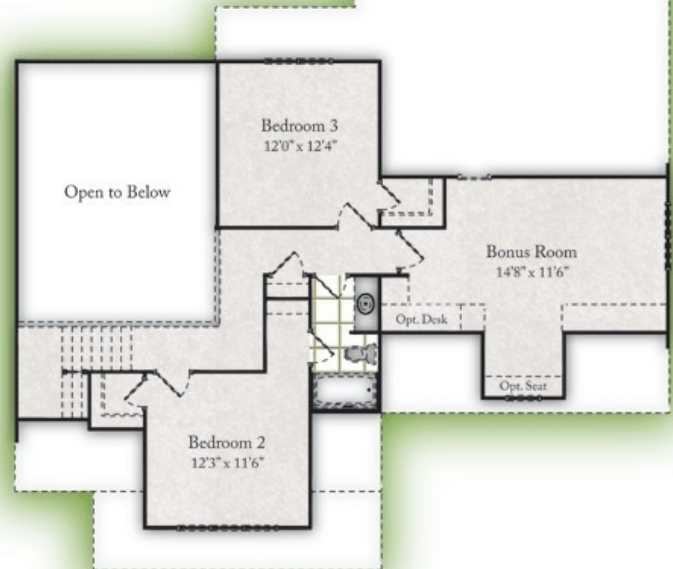




The Seabrook



2nd Floor:



Options:

Continuous improvements of our plans and community specifications may result in changes w Any dimensional data shown is approximate. Artwork is for illustrative purposes only. Actual details may vary. This plan is property of Bill Clark Homes. Duplication of this plan is pr



- Hardwoods
- Tile Baths
- Porch
- Fireplace
- Granite Kitchen Counters
- 2,225 Sq. ft./ 2,441 w/bonus
- Hardie Color Plus Siding

Bill Clark Homes
Building the Tradition

For more information contact Brandon Adams at (910) 523-0056

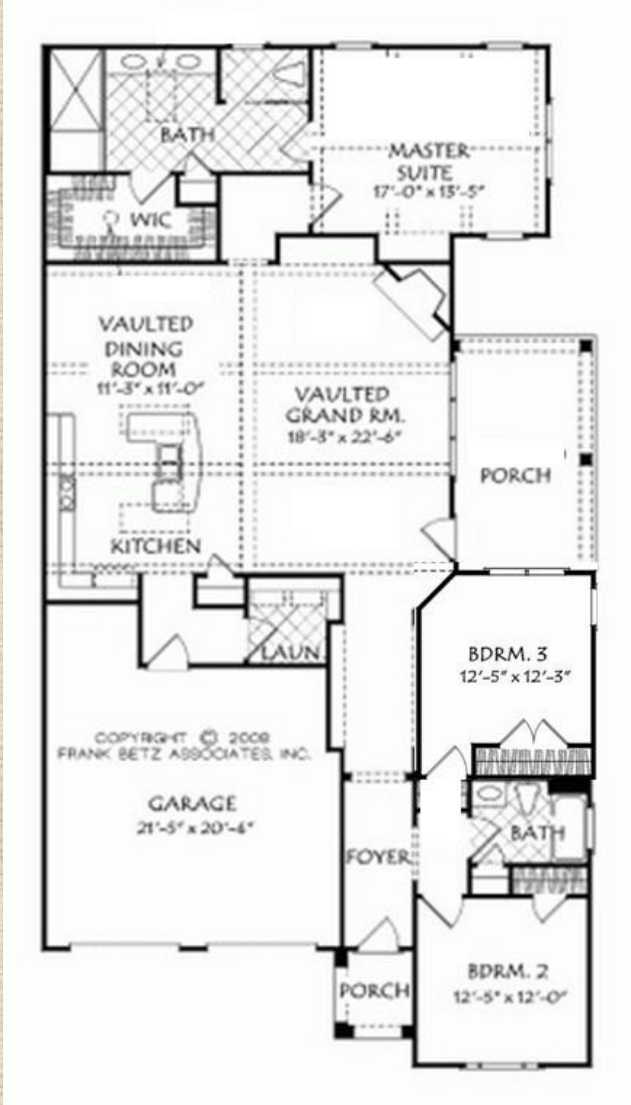
www.marshlandingplace.com





MARSH
LANDING
PLACE

The Hibiscus



- Hardwoods
- Tile Baths
- Screened Porch
- Fireplace
- Granite Kitchen Counters
- 2,010 Sq. ft
- Hardie Color Plus Siding w// brick



For more information contact Brandon Adams at (910) 523-0056

www.marshlandingplace.com

